

- TREES**
 Size Min. 50L
- Brabejum stellatifolium
 - Buddleja saligna
 - Celtis africana
 - Cunonia capensis
 - Curtisia dentata
 - Dovyalis caffra
 - Ekebergia capensis
 - Erythrina lysistemon
 - Halleria lucida
 - Harpephyllum caffrum
 - Kiggelaria africana
 - Nuxia floribunda
 - Podocarpus falcatus
 - Olea europea subsp. Africana
 - Tarchonanthus camphoratus

- SHRUBS & GROUNDCOVERS**
 Size min. 6 Packs @ 3-5/m²
- Agathosma spp.
 - Aristea spp.
 - Asparagus spp.
 - Barleria spp.
 - Buddleja salivifolia
 - Bauhinia galpinii / tometosa
 - Chrysanthemoides incanum
 - Colenema alba / pulchellum
 - Elegia tectorum / "Fishhoek"
 - Eriocephalus africanus
 - Felicia amelloides / fillifolia
 - Lampranthus falciformis
 - Mackaya bella
 - Osteospermum spp.
 - Plumbago auriculata
 - Polygala "Gientana" / myrtifolia
 - Rumohra adiantiformis
 - Salvia africana-caerulea / chamelaeagnea
 - Tecoma capensis
 - Zantedeschia aethiopica

REMOVE PALM UNDER TREE

CREATE NEW TIMBER STEPS

PLANT NEW TREES

REMOVE DEFUNCT BARBED WIRE ALONG BOUNDARIES

CREATE BUILT STEPS & RE-INSTATE EXISTING TIMBER STEPS

REMOVE EXISTING STUMP

CREATE SEATING USING EXISTING STUMPS

REMOVE DEAD TREES

OPEN LAWN AREA

INTERPLANT EXISTING WITH INDIGENOUS VEGETATION

REMOVE ALL ALIEN INVASIVE PLANTING

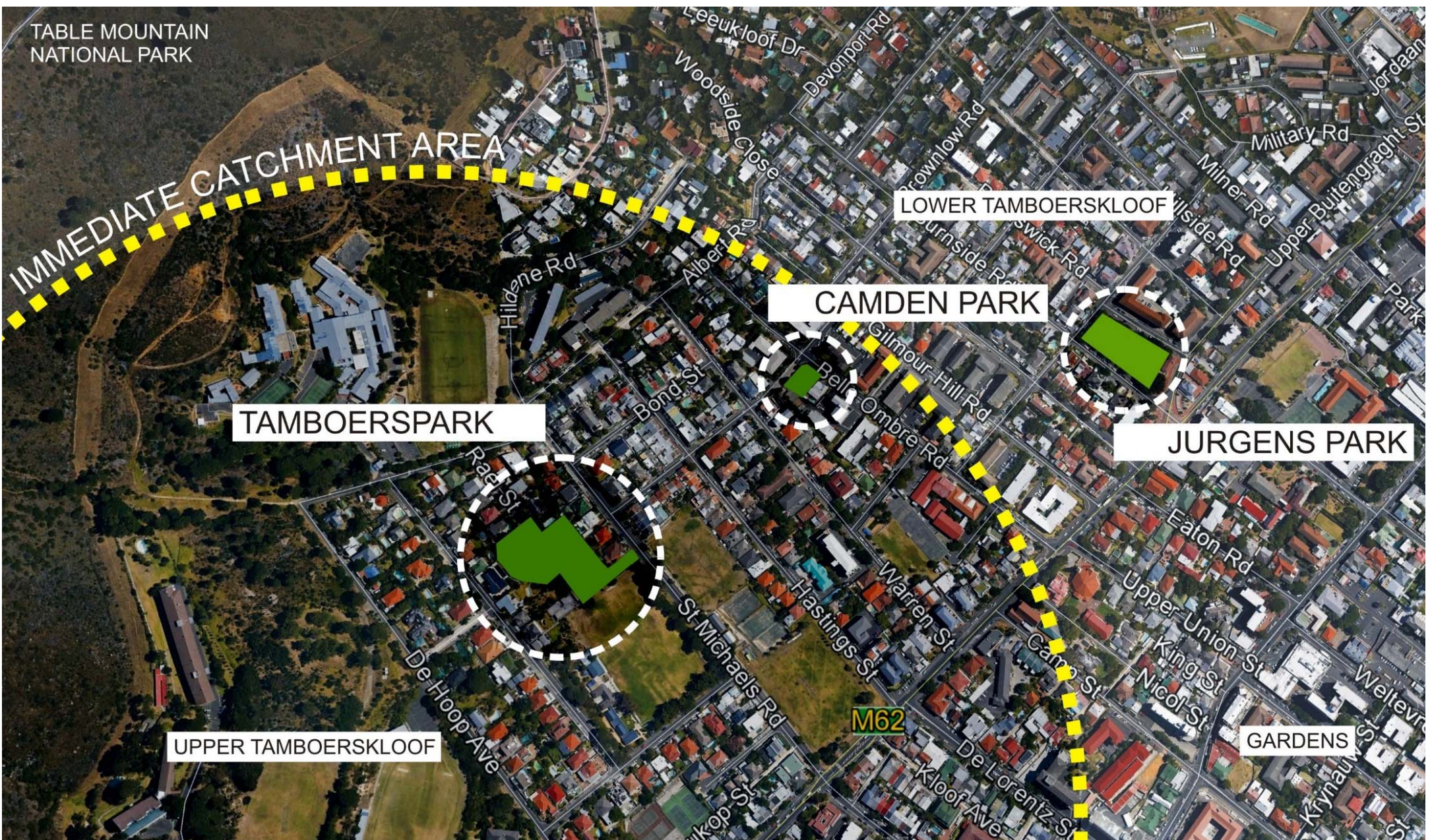
- PRICKLY PEAR
- ROOKRANS
- KIKUYU GRASS
- SPANISH GRASS
- AGAVE SPP.

TRIM FALLEN TREE TO CREATE CHILDRENS' PLAY AREA

INDIGENOUS BOUNDARY PLANTING

NOTES:

- Irrigation system to be manual (should tap points be installed) using hose pipes.
- All trees to be staked using either 1x50mm OR 2x50mm DIA (depending on tree size) tanalith treated poles driven 600mm into the ground and tied by means of two rubber hoses and wire or commercial tree ties. Care must be taken not to damage the root ball of the tree.



TAMBOERS PARK

PRO-BONO PROJECT

CAPE TOWN



cndv
landscape
architects